

LHT YA1 3002, & LHT YA3 7002 Yamaha G2/G9 Models



BUGGIES
UNLIMITED



Caution: Wear appropriate eye protection!

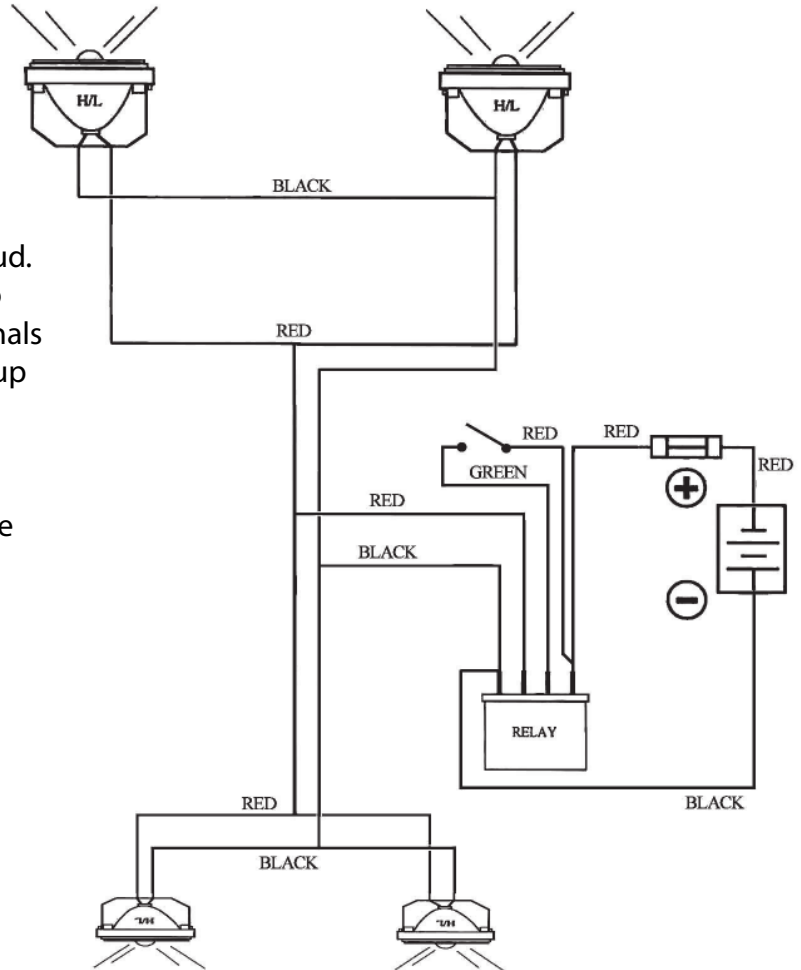
Disconnect the battery or battery pack before the installation.

The wiring harness is a plug and play style. Route the harness end with separate red and black wires to the front of the car. Plug the connectors together and connect the black ring wire to the marker lamp 1/4" stud. Connect the single black wire from the marker lamp to the single red harness wire. If you are utilizing turn signals use the single marker (black) wire for this circuit. Tape up the single red wire on the harness.

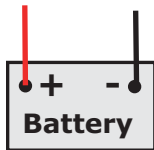
For the rear, just plug the connectors together. For brake lights or turn signals connect to the single red wire protruding from the assembly. Otherwise tape the red wire up.

Connect the main positive wire (with fuse) to number 5 battery on electric cars. For gas cars use the main solenoid positive or the main battery terminal. Connect the main negative black wire to battery number 6. For gas cars connect to the main battery negative terminal.

Note: it may be necessary to increase the size of wire connectors on the two connection points.



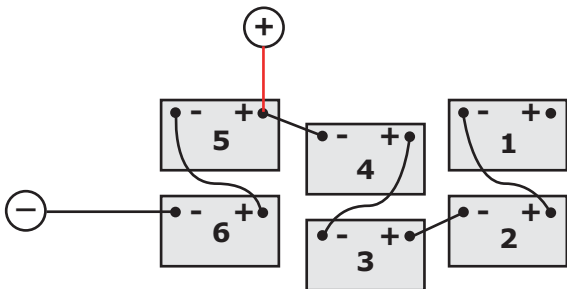
Headlight Wiring For 12 Volt Gas Carts



NOTE: DO NOT USE FRAME GROUNDS ON GAS OR ELECTRIC CARTS!



Yamaha 36-Volt Battery Pack



Buggies Unlimited
1-888-444-9994

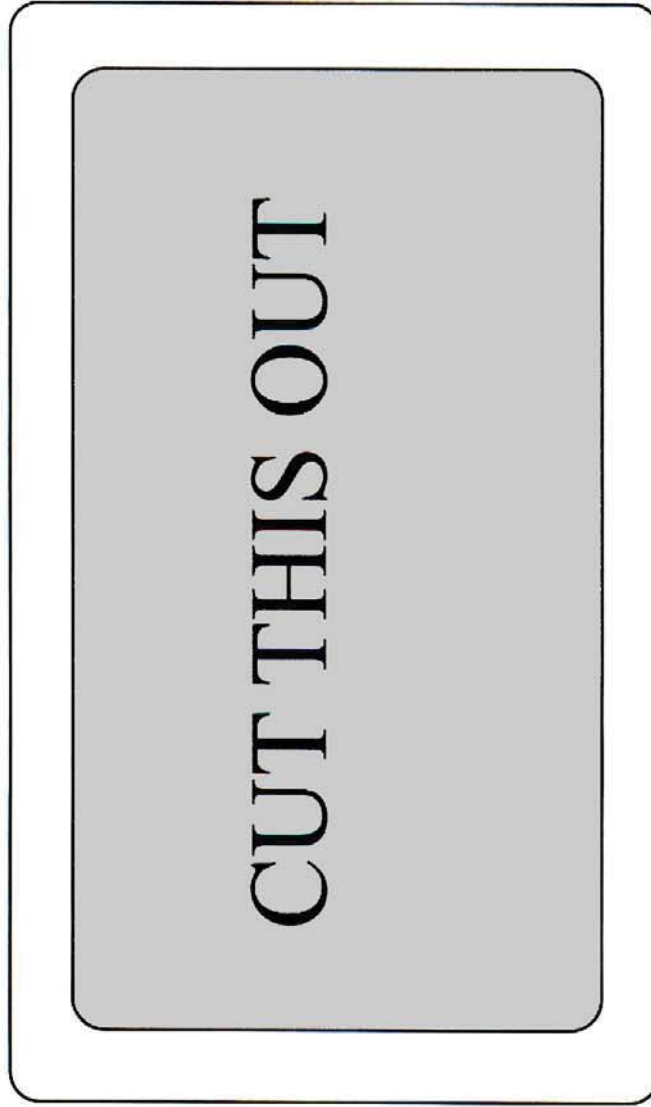
www.buggiesunlimited.com

© Copyright 1997-2008 Buggies Unlimited. All Rights Reserved.

Center on Fender



Tail Light Template



Center on Fender



Center on Fender

Center on Fender



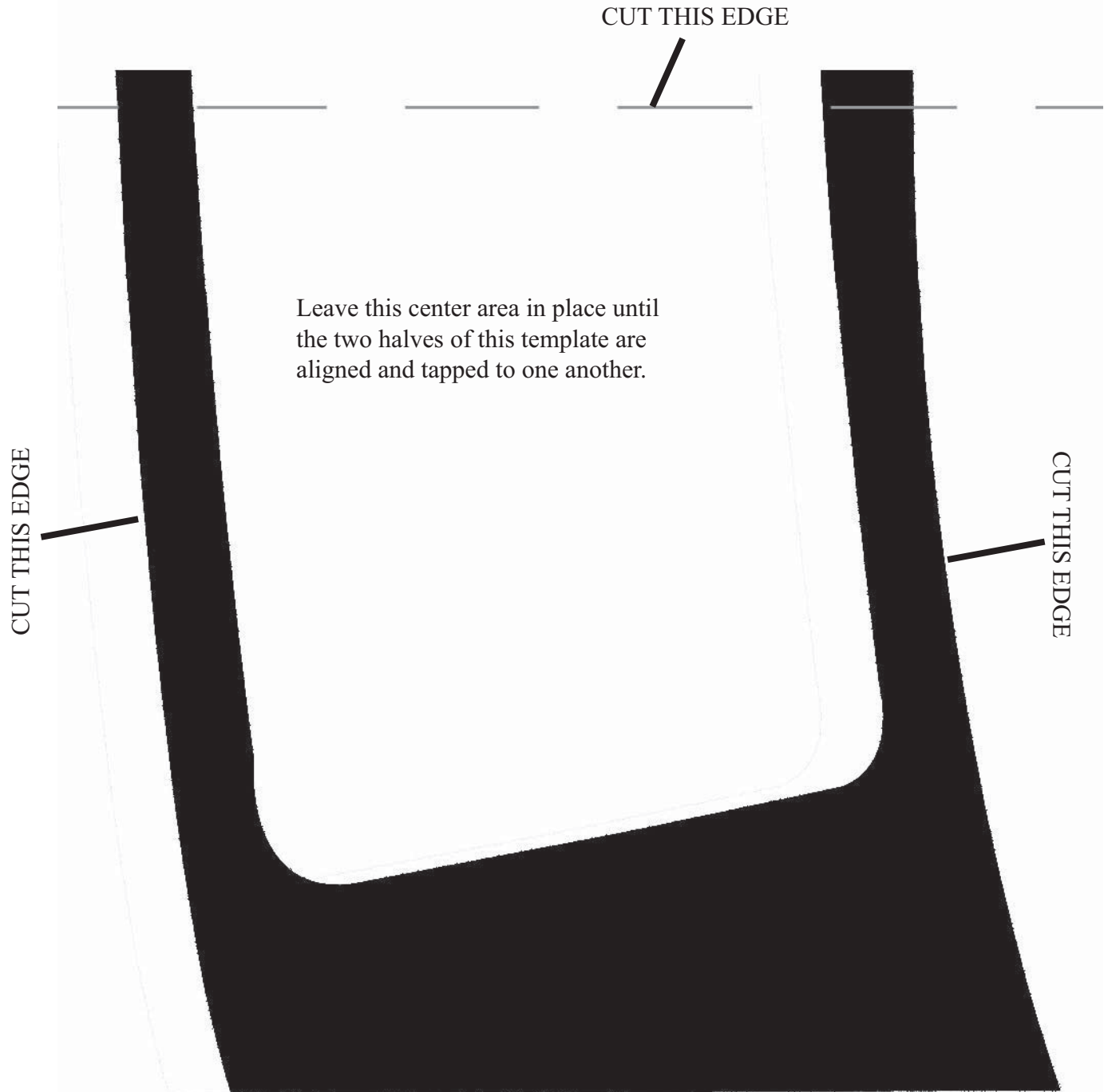
Buggies Unlimited
1-888-444-9994
www.buggiesunlimited.com

© Copyright 1997-2008 Buggies Unlimited. All Rights Reserved.

LEFT HEADLIGHT (Driver Side)

- 1) Cut both template halves out and mate them together exactly at the gray dotted line. Secure them using clear tape.
- 2) Next, remove the white center from the template, leaving only the black portions.
- 3) Line up top edge of template with bottom of front body Radius, on the left (driver) side of your cart.
- 4) Position the marked edge of this template exactly 7 1/2" from the gap between the middle "A" and the "M" in the center "YAMAHA" name plate and secure it to the body using some clear tape around the outside edges.
- 5) Mark the body with a nonpermanent marker, tracing the inside opening of this template, then remove the template.

NOTE: This template is sized conservatively and you may have to trim additional material from the body before your head lights will fit.

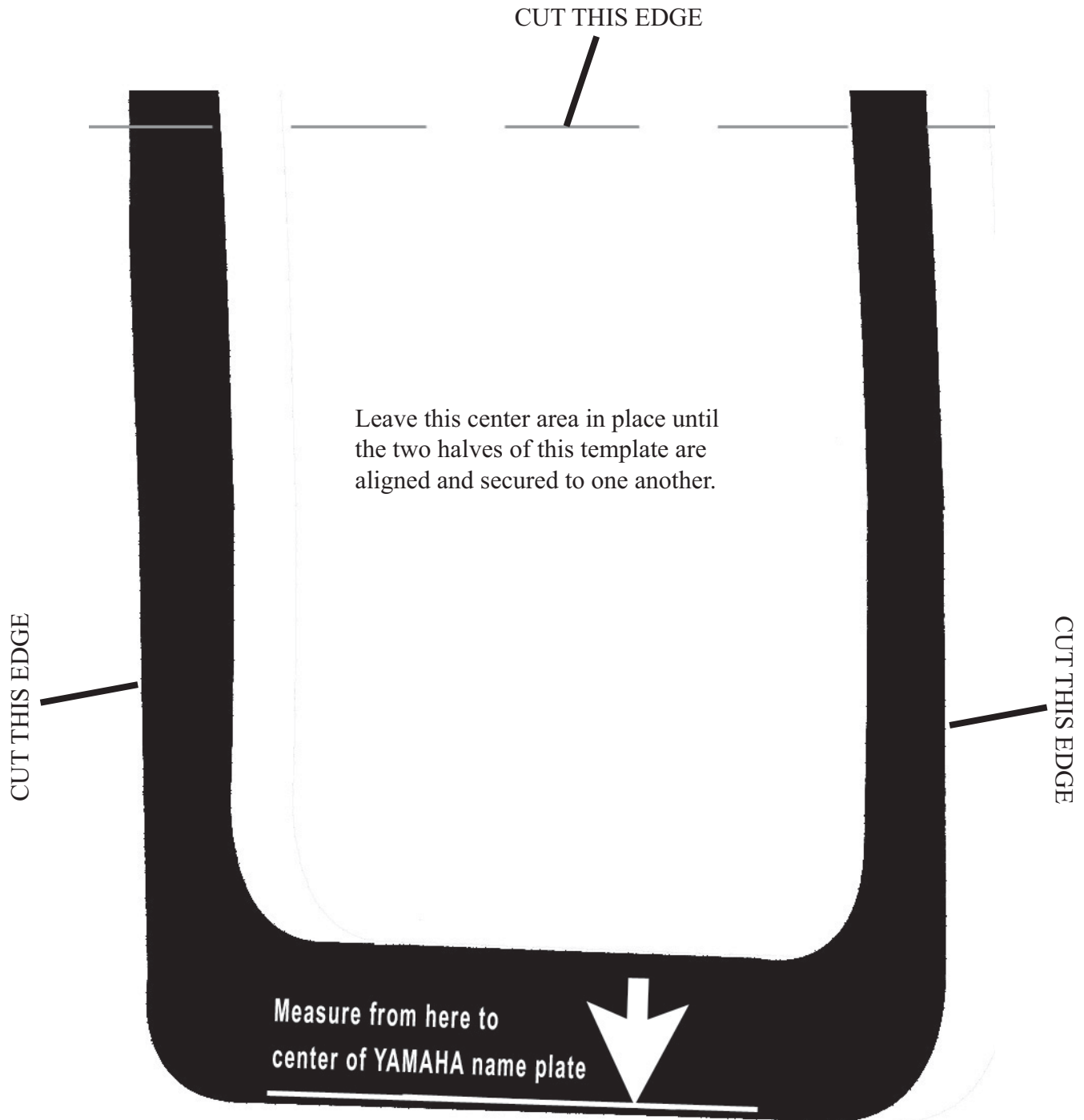


Buggies Unlimited
1-888-444-9994
www.buggiesunlimited.com

RIGHT HEADLIGHT (Passenger Side)

- 1) Invert this template positioning the black face against the body, for the right (passenger) side of your cart..
- 2) Line up top edge of template with bottom of front body Radius
- 3) Position the marked edge of this template exactly 7 1/2" from the gap between the middle "A" and the "M" in the center "YAMAHA" name plate and secure it to the body using some clear tape around the outside edges.
- 4) Mark the body with a nonpermanent marker, tracing the inside opening of this template
- 5) Cut around the inside edge of the makings on your body. You may have to trim the opening some to fit your head lights, but this will ensure the opening you cut is not too larger

NOTE: This template is sized conservatively and you may have to trim additional material from the body before your head lights will fit.



Buggies Unlimited
1-888-444-9994
www.buggiesunlimited.com